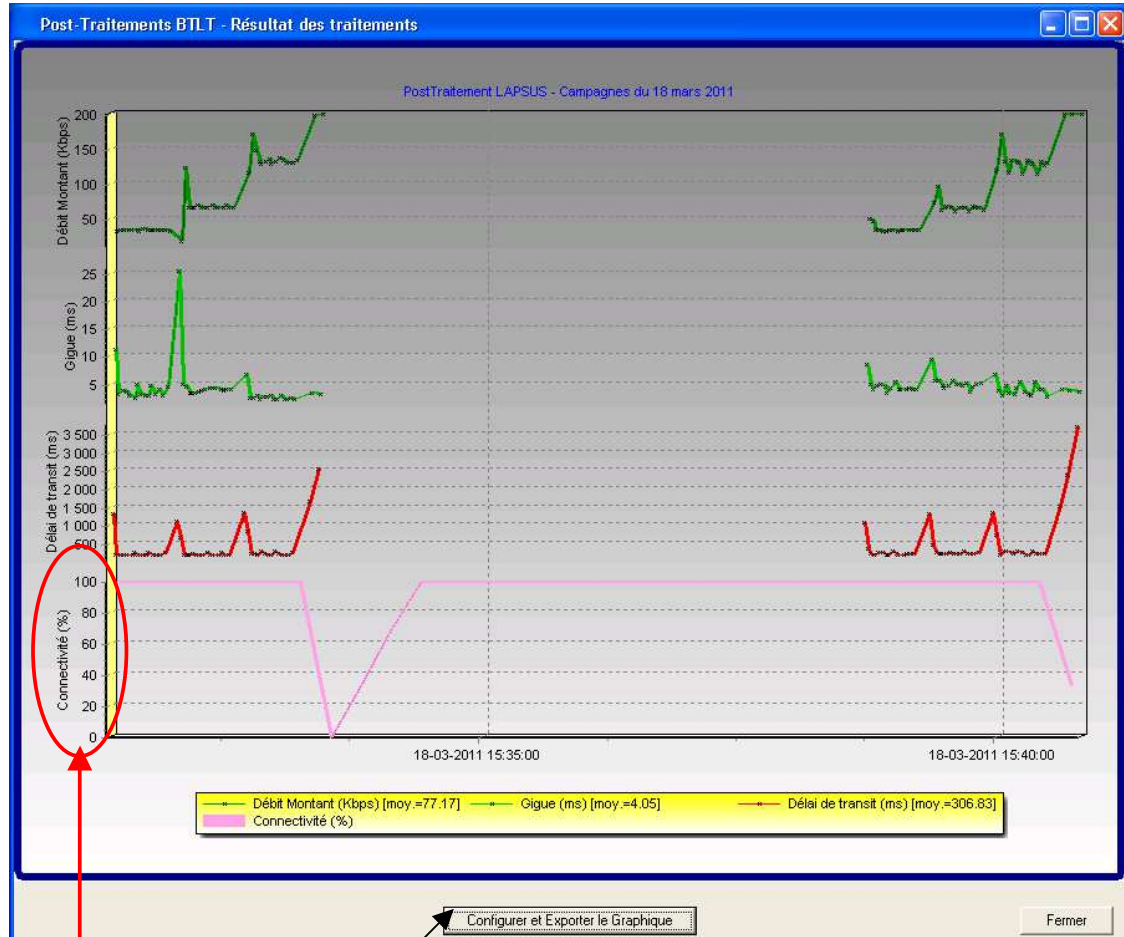


Initial chart



Button to access to the editor

Initial Axis values (0..100)

Editing

Chart Series Data Tools Animations Export Print OpenGL Themes

Connectivité (%) Line: Connectivité (%)

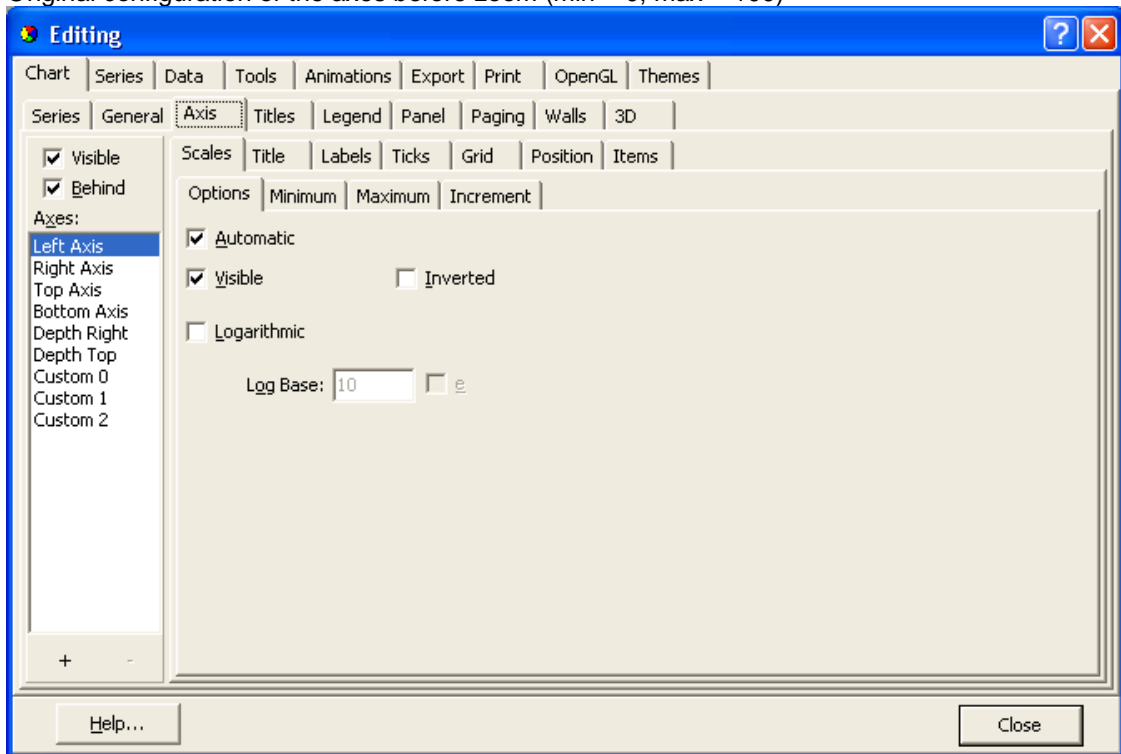
Format Point General Marks Data Source

Manual

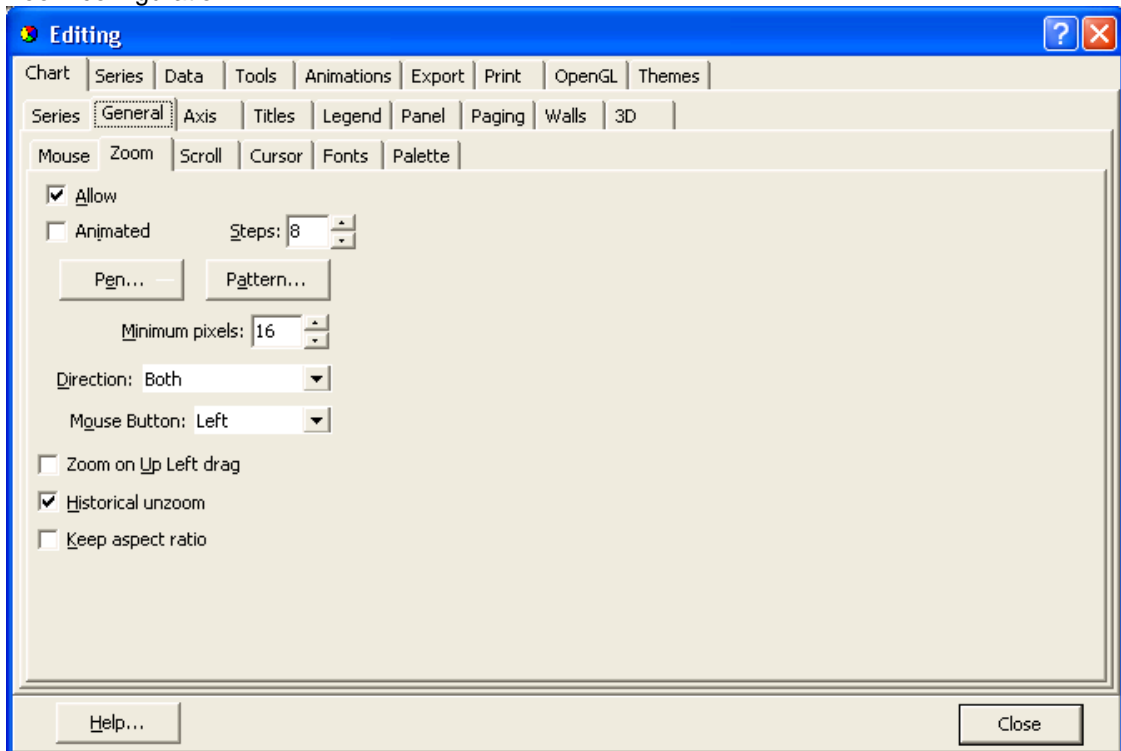
#	Colors	Text	X	Y
0			18/03/2011 15:31:29	100
1			18/03/2011 15:31:42	100
2			18/03/2011 15:32:02	100
3			18/03/2011 15:32:20	100
4			18/03/2011 15:32:39	100
5			18/03/2011 15:32:57	100
6			18/03/2011 15:33:16	100
7			18/03/2011 15:33:34	0
8			18/03/2011 15:33:51	33,333
9			18/03/2011 15:34:07	66,667
10			18/03/2011 15:34:26	100
11			18/03/2011 15:34:45	100
12			18/03/2011 15:35:04	100
13			18/03/2011 15:35:24	100
14			18/03/2011 15:35:43	100
15			18/03/2011 15:36:02	100
16			18/03/2011 15:36:21	100
17			18/03/2011 15:36:39	100
18			18/03/2011 15:36:59	100
19			18/03/2011 15:37:18	100
20			18/03/2011 15:37:36	100
21			18/03/2011 15:37:56	100
22			18/03/2011 15:38:15	100
23			18/03/2011 15:38:34	100
24			18/03/2011 15:38:52	100

Help... Close

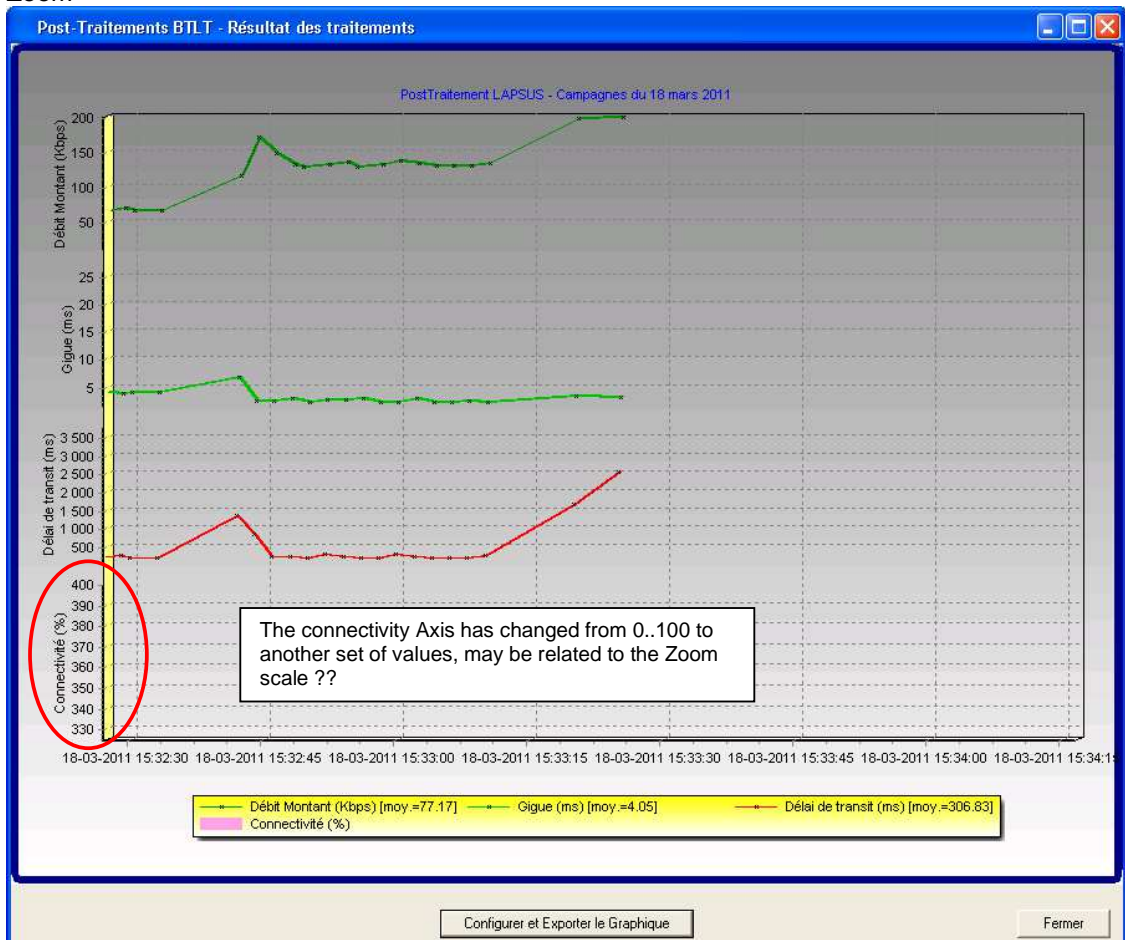
Original configuration of the axes before zoom (min = 0, max = 100)



Zoom configuration



Zoom



After zoom, Left axis configuration has changed

